



bSNK24

*buildingSMART Norge
Konferansen*

 buildingSMART.
Norge

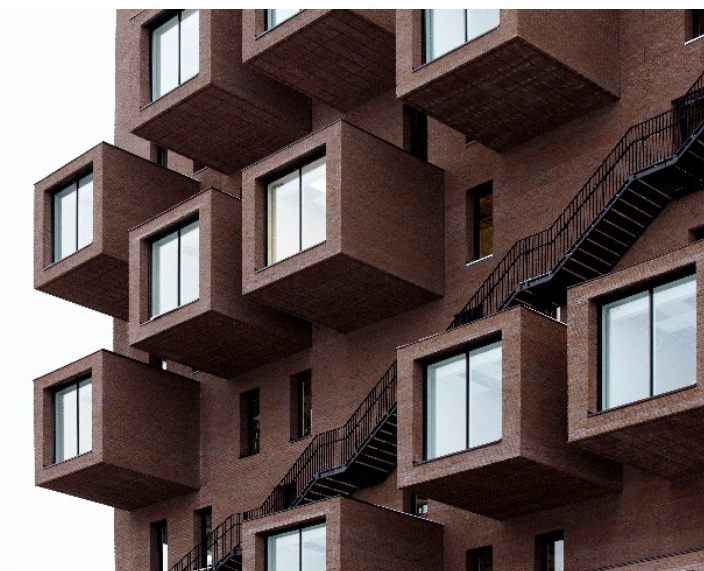


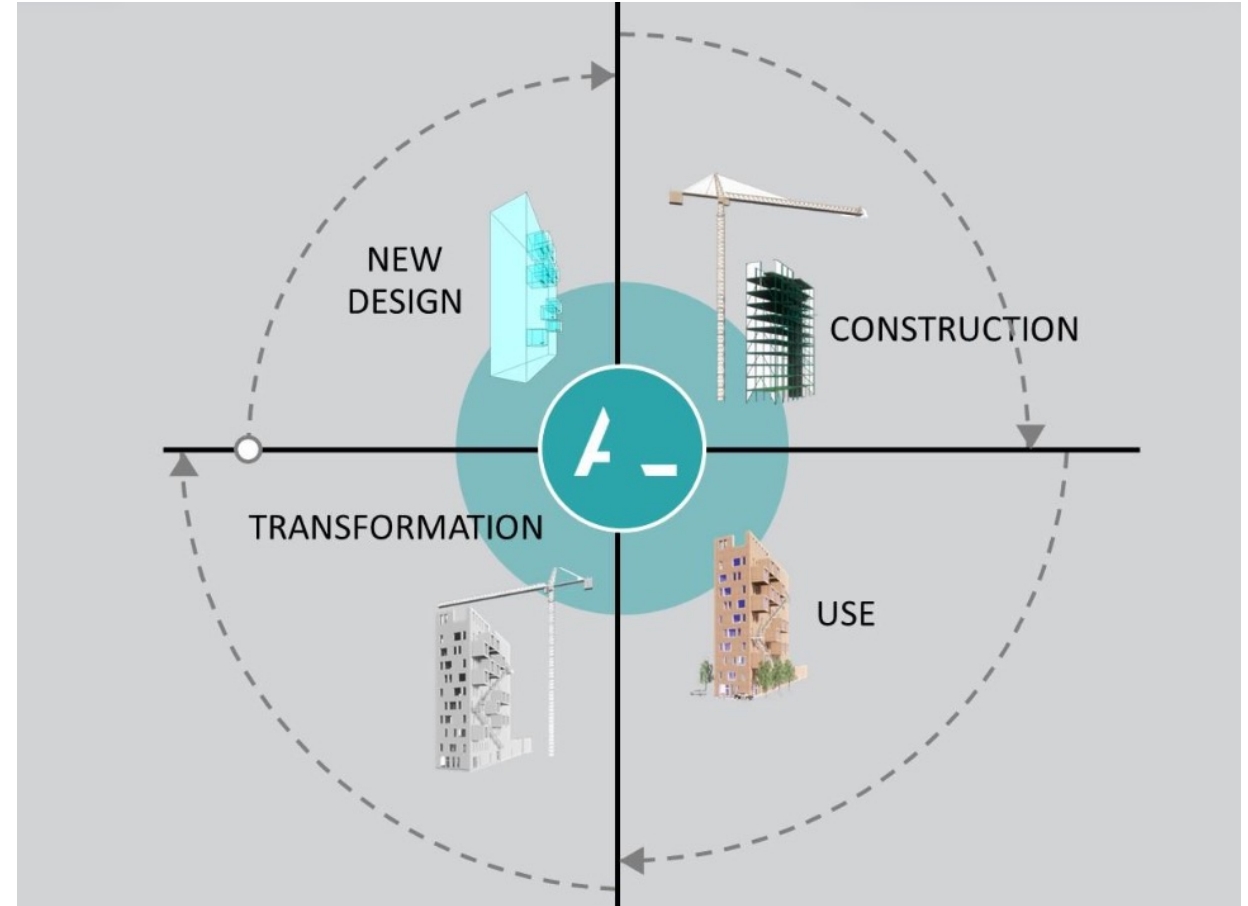
Photo: A-lab and Ivan Brodey





A buildingSMART Digital Twins Working Group Paper

Enabling an Ecosystem of Digital Twins – An Update



OPEN | NEUTRAL | NON-PROFIT



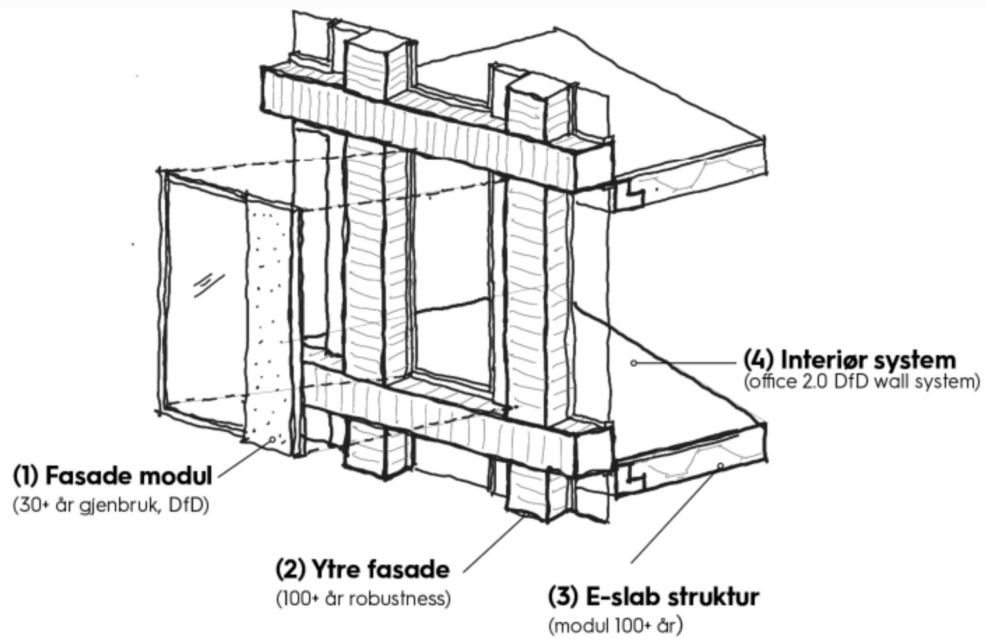
Level(s) indicator 2.3: Design for adaptability and renovation

1.2 Façade pattern

Narrower bays will allow for more internal
space configurations

Spacing between bays:

- 1350 to >1800 mm 0 points
- 1350 - 1800 mm 1 point
- 1350 - 1800 mm, some bays 900 - 1350 mm 2 points
- 900 - 1350 mm, some bays < 900 mm 3 points



80 of the buildings that will be used
in 2050 already exist



If a building was a person...



Inner Health

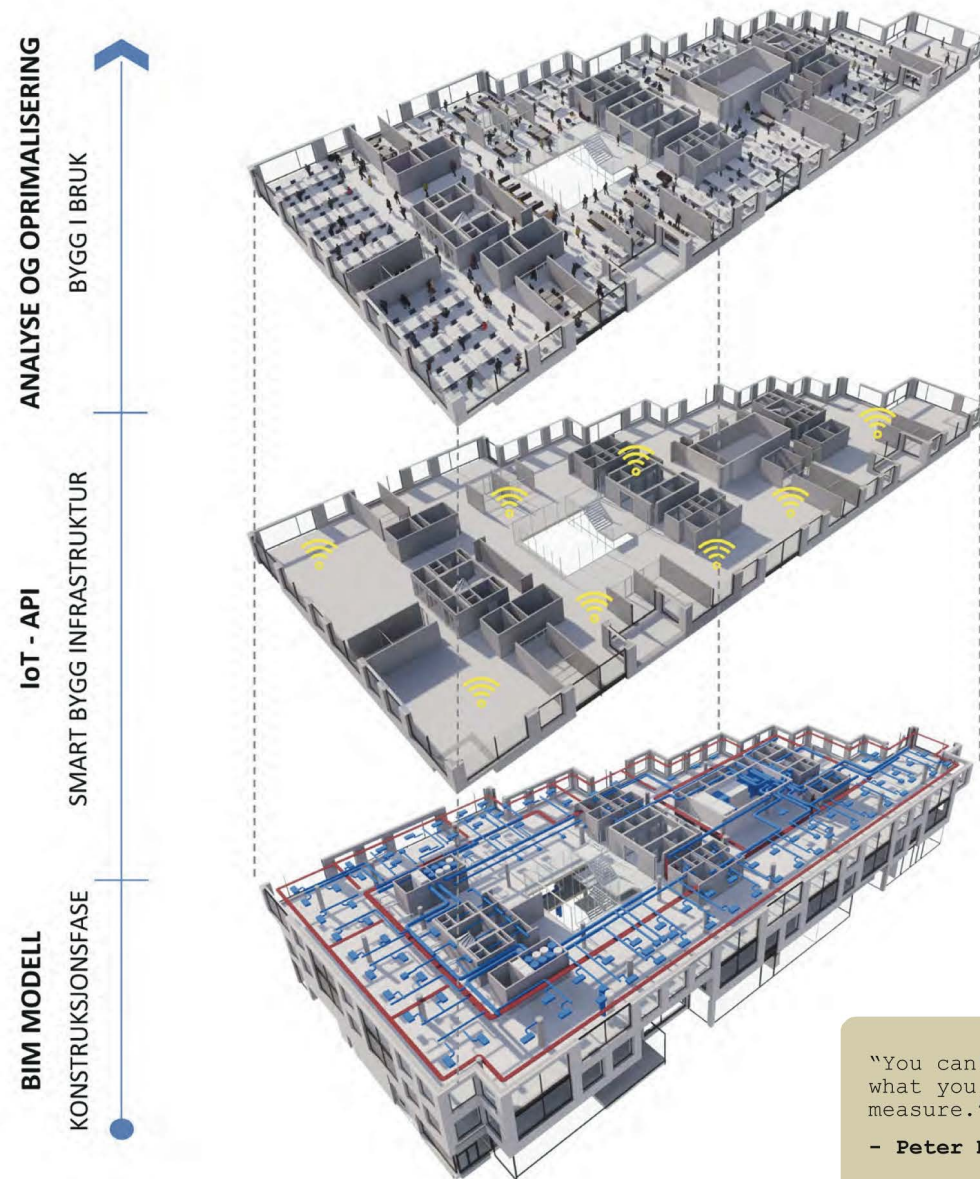


How it meets the urban context?



How it serves to/from the urban context?

Will digital twins be key to extend the building lifespan?

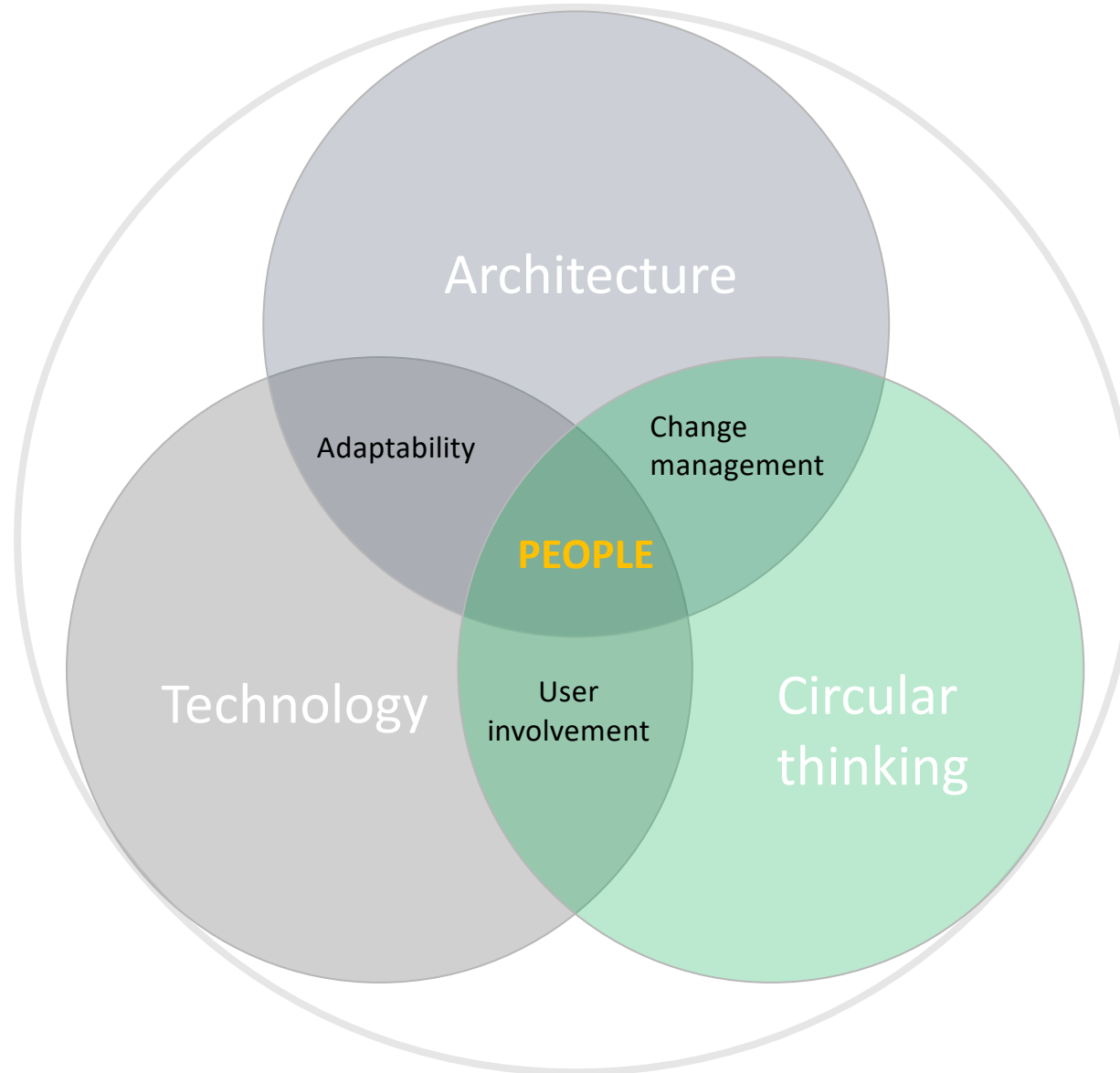


"You can't manage what you don't measure."
- Peter Drucker

Ecosystem of Digital Twins



Every project is a prototype

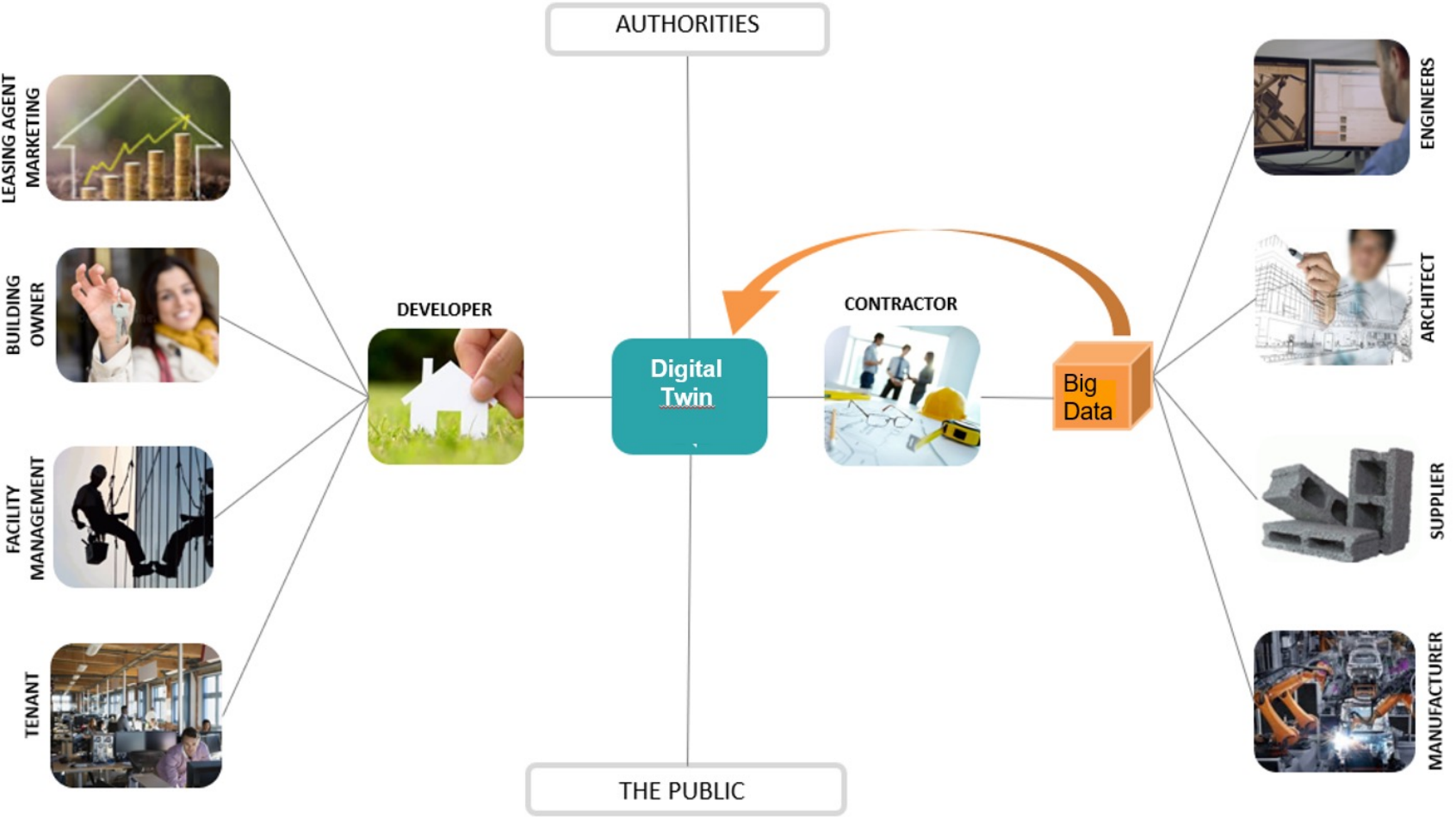


DESIGN TRENDS 2024

The future of the
workplace as a compelling
destination



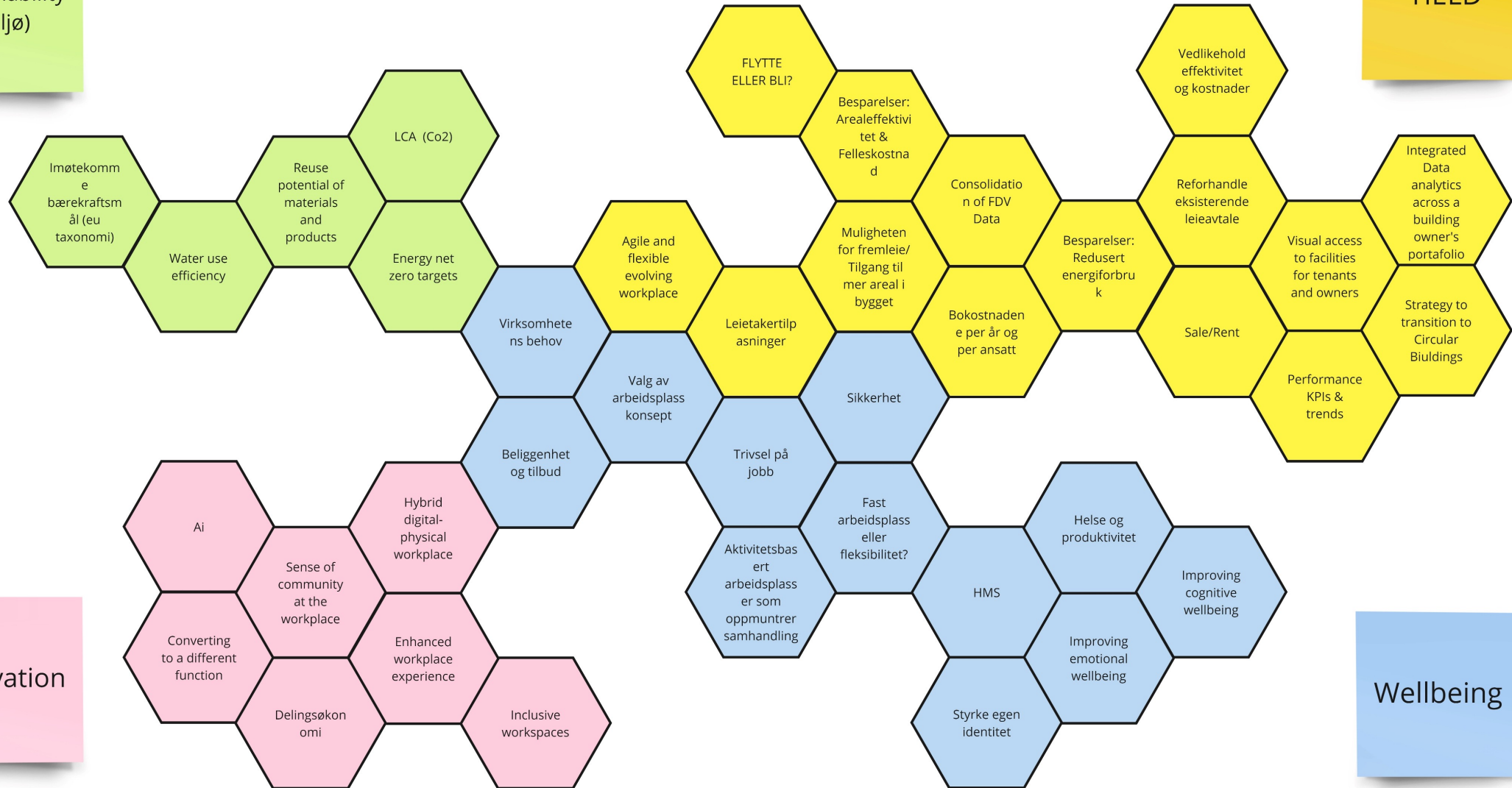
BUSINESS MODELS



SERVICES

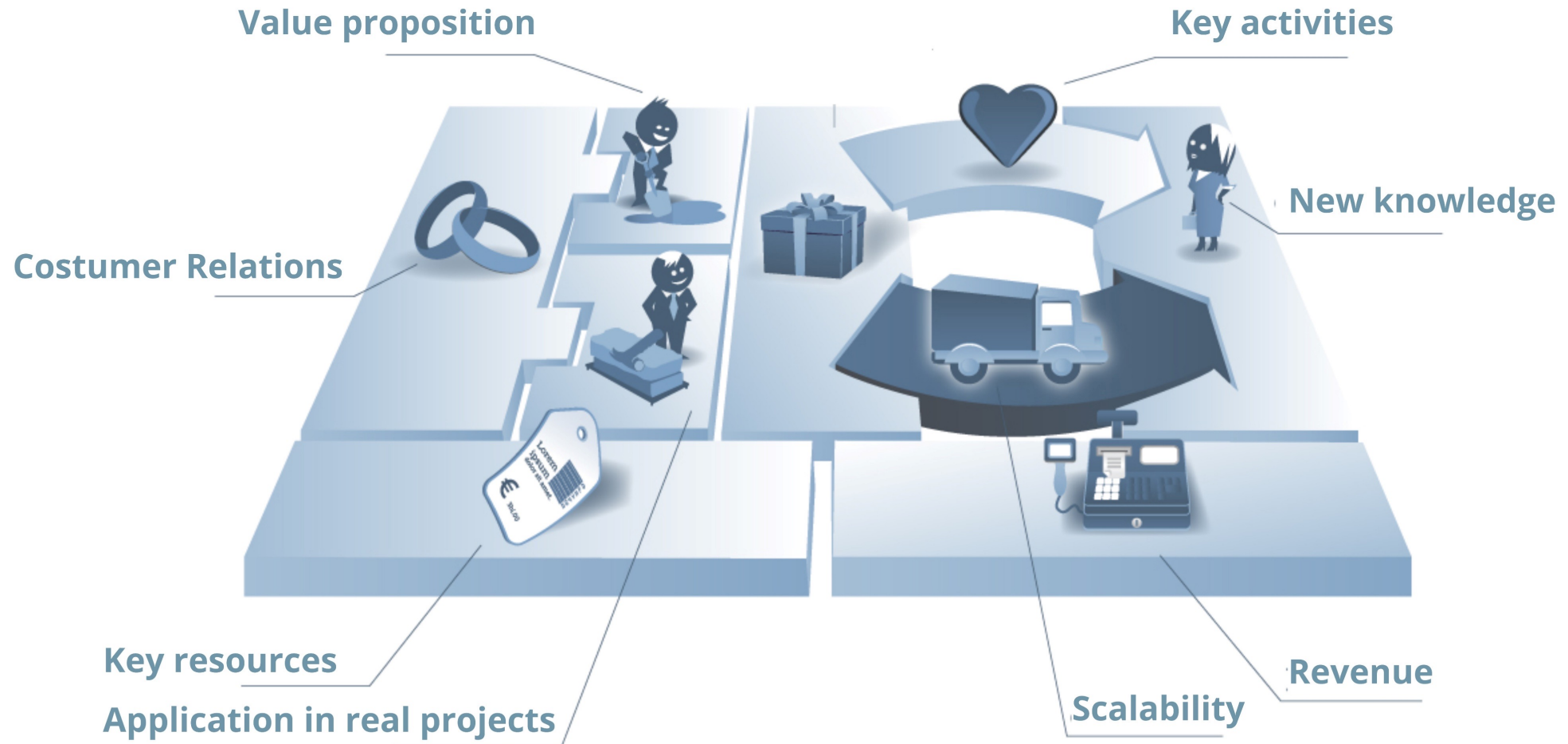
Sustainability
(Miljø)

YIELD



Innovation

Wellbeing



A high-angle, wide shot of a modern office space. The room is bright, with sunlight streaming in from a large window on the right. In the foreground, a woman in a black suit sits in a black armchair, looking at her phone. To her left, a man in a dark suit stands near a desk, also on his phone. In the background, several other people are visible, some standing and talking, others sitting at desks. The office has a clean, minimalist aesthetic with white desks and chairs. The overall atmosphere is professional and active.

60%

Gjennomsnitt areal utnyttelse

Globalt er 40% av arbeidsområdet tomt og står ubenyttet hver dag. Kilde: JLL Occupancy Benchmarking Gruide 2019.

30%

Gjennomsnitt bruk av møterom

Og når de er i bruk, bare 40% av ledige sitteplasser benyttes. Kilde: CBRE Report.

Uformelle møteplasser

Kan redusere etterspørselen etter møterom og store konferanserom.



Møter mellom 2, 3 eller 4 stk

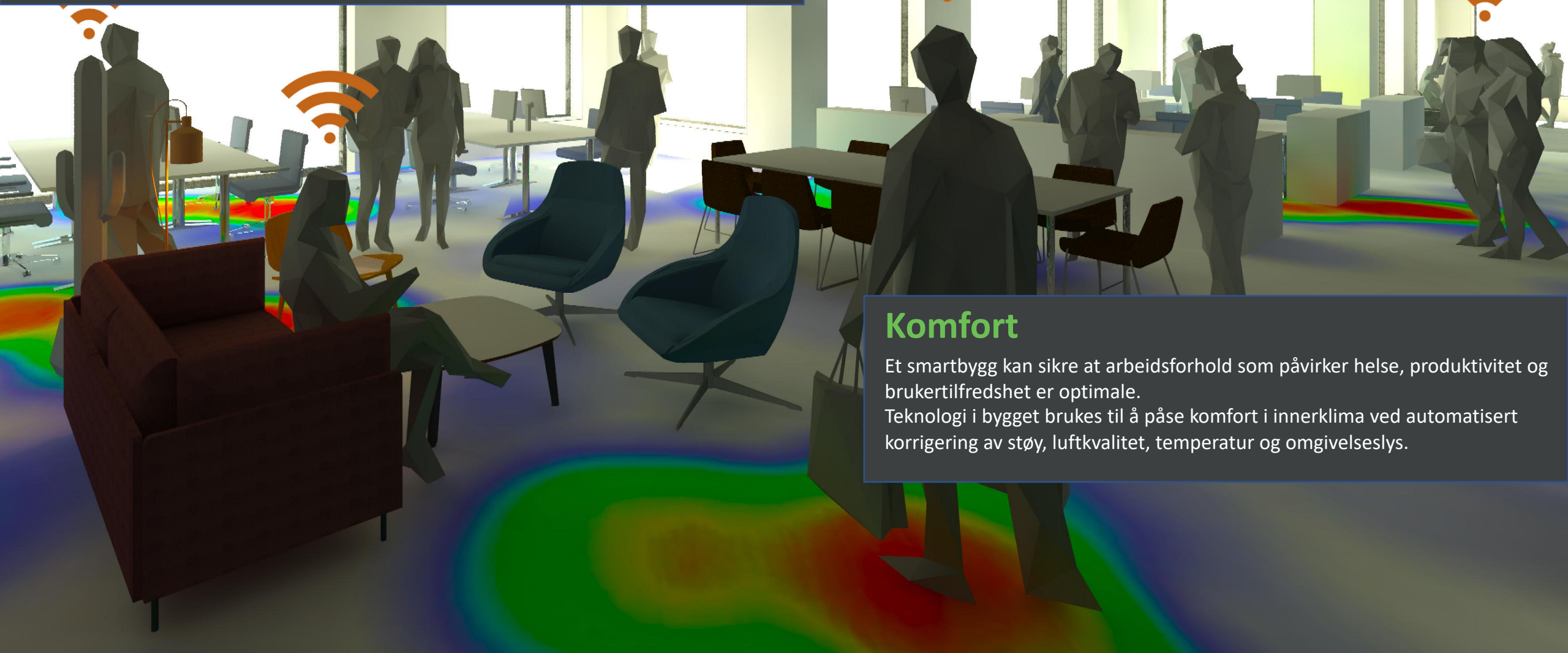
Bookes ofte i rom med mye større kapasitet enn antallet deltagere

Psykososiale arbeidsbetingelser

dreier seg først og fremst om de mellommenneskelige forholdene på arbeidsplassen samt om form og innhold i disse. Arbeidsmiljøloven § 4-3.

Smartbygg muliggjør diagnose av aktivitetsnivå i sosiale områder, sørger for at det skapes bedre forbindelser og kommunikasjon mellom de ansatte.

Dette stimulerer til innovasjon, kreativitet og teambygging og skaper mindre sykefravær / lavere turnover.



Komfort

Et smartbygg kan sikre at arbeidsforhold som påvirker helse, produktivitet og brukertilfredshet er optimale.

Teknologi i bygget brukes til å påse komfort i innerklima ved automatisert korrigering av støy, luftkvalitet, temperatur og omgivelseslys.